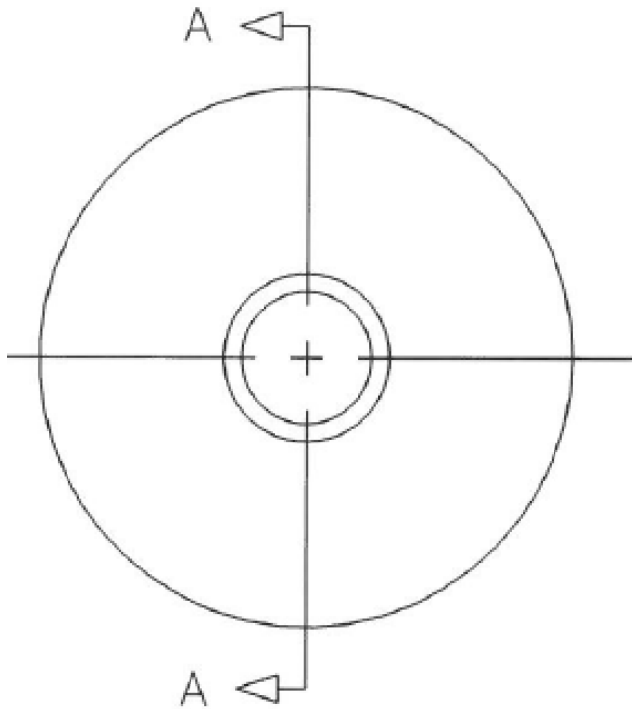
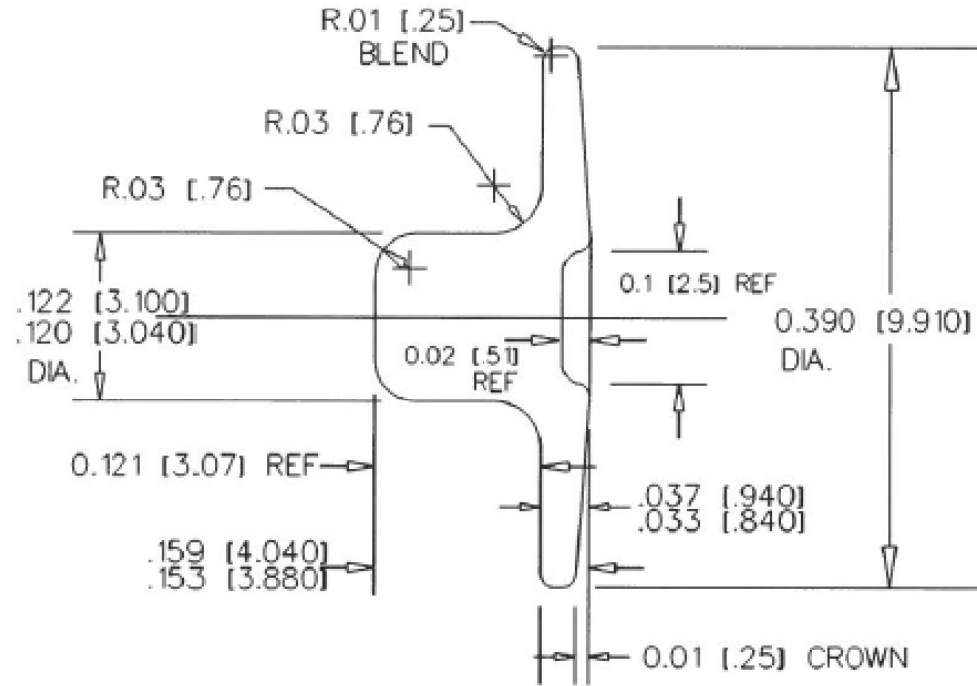


THE INFORMATION CONTAINED IN THIS DRAWING IS THE SOLE PROPERTY OF ROME FASTENER CORPORATION ANY REPRODUCTION IN PART OR WHOLE WITHOUT THE WRITTEN PERMISSION OF ROME FASTENER CORPORATION IS PROHIBITED.



SECTION A-A



NOTES :

COATING - 14P EYELET-901-0.1 AgAgCl 0.1 mils CONDUCTIVE

ALL DIAMETERS TO BE CONCENTRIC WITHIN .005" [0.13]



UNLESS OTHERWISE SPECIFIED
DIMENSIONS ARE IN INCHES
TOLERANCES ARE:
FRACTIONS DECIMALS ANGLES
+/- 1/32 .XX+/- .03 +/- 2
.XXX+/- .005

CAD GENERATED DRAWING,
DO NOT MANUALLY UPDATE

APPROVALS		DATE
DRAWN	CRL	10.1.18
CHECKED		
RESP ENG		
MFG ENG		
QUAL ENG		

14P EYELET-901-AA

NEXT ASSY	USED ON
APPLICATION	

MATERIAL ABS - PLASTIC
FINISH SEE NOTES
DO NOT SCALE DRAWING

SIZE	DWG. NO.	REV.
A		
SCALE	CAD FILE:	SHEET OF